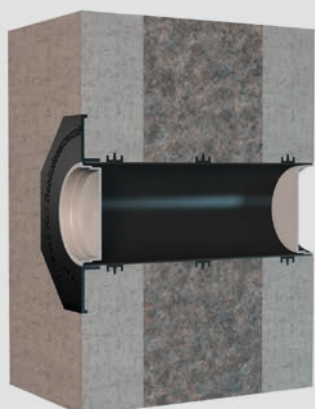
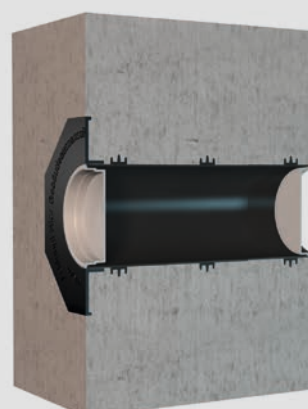


## The wall sleeve of the future

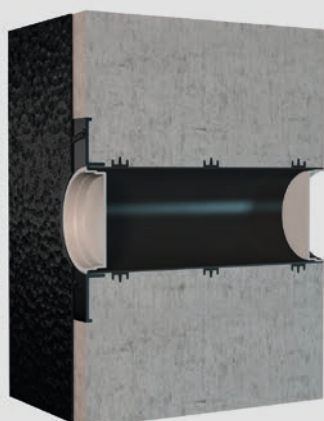
wall types / installation options



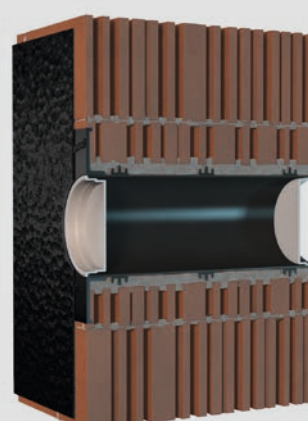
UFR in double wall/element wall



UFR in waterproof concrete wall

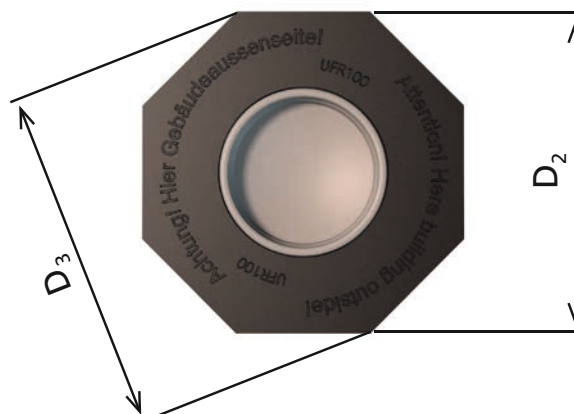
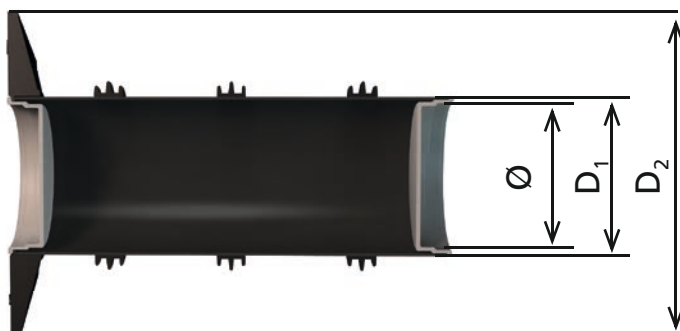


UFR in concrete wall with outer seal



UFR in brick basement with outer seal

The three ribbed seals and the patch flange allow installation in four different wall types.



# The universal wall sleeve UFR

with patch flange for every wall type



Article code:  
UFR (D)/X

## Features and technical data:

- with patch flange for applying polymer modified bituminous thick coatings
- can be used in all wall types including element wall structures
- application: DIN 18195, part 4 waterproof concrete stress class 1
- tested in KIWA construction test
- can be cut to length on-site
- resistant to breakage
- simple installation in the shuttering
- for installation flush with the shuttering
- supplied with cover, ready for installation

## Dimensions

| Wall sleeve<br>$\varnothing_1$ (mm) | Wall sleeve<br>$\varnothing_2$ (mm) D <sub>1</sub> | Patch flange<br>$\varnothing_3$ (mm) D <sub>2</sub> | Patch flange<br>$\varnothing_4$ (mm) D <sub>3</sub> | Article code |
|-------------------------------------|--|---|---|--------------|
| 100                                 | 110  | 210   | 227   | UFR 100/X    |
| 150                                 | 162  | 260   | 282   | UFR 150/X    |
| 200                                 | 214  | 311   | 336   | UFR 200/X    |

The UFR is a plastic wall sleeve with a patch flange and 3-ribbed seal. When using polymer modified bituminous thick coatings and mineral sealing slurries (load case according to DIN 18195, part 4) the outer seal can be connected to the patch flange. The 3-ribbed seals ensure a reliable seal even with double walls/element walls and waterproof concrete.